

THE HOMES MAGAZINE FOR MODERN LIVING

20% OFF
AT
HABITAT

JUNE 2016 / £4.20 US \$9.99/AUS \$9.95/NZ \$11.50

Living

THE WHITE ISSUE

**THE BEST
WHITE KITCHENS**

**NEW
MONOCHROME
STYLE**

**WORKING
WITH WHITE:
THE EXPERTS'
TOP TIPS**

ELEGANT HOMES

Easy living in pale spaces

THE SHOPPING EDIT

15 PAGES OF NEUTRAL MUST-HAVES

PURE AND SIMPLE DECO LOOKS

From gallery bright to sun-bleached Ibiza



RECALL: 1/6/2016

House of the Month

NEUTRAL

As an antidote to her high-octane job,
Rebecca designed her
Scandi-white-meets-luxe apartment
with calm in mind

ZONE

Photography/Nato Welton * Production/Mary Weaver * Words/Jenny Tucker and Caroline Phillips



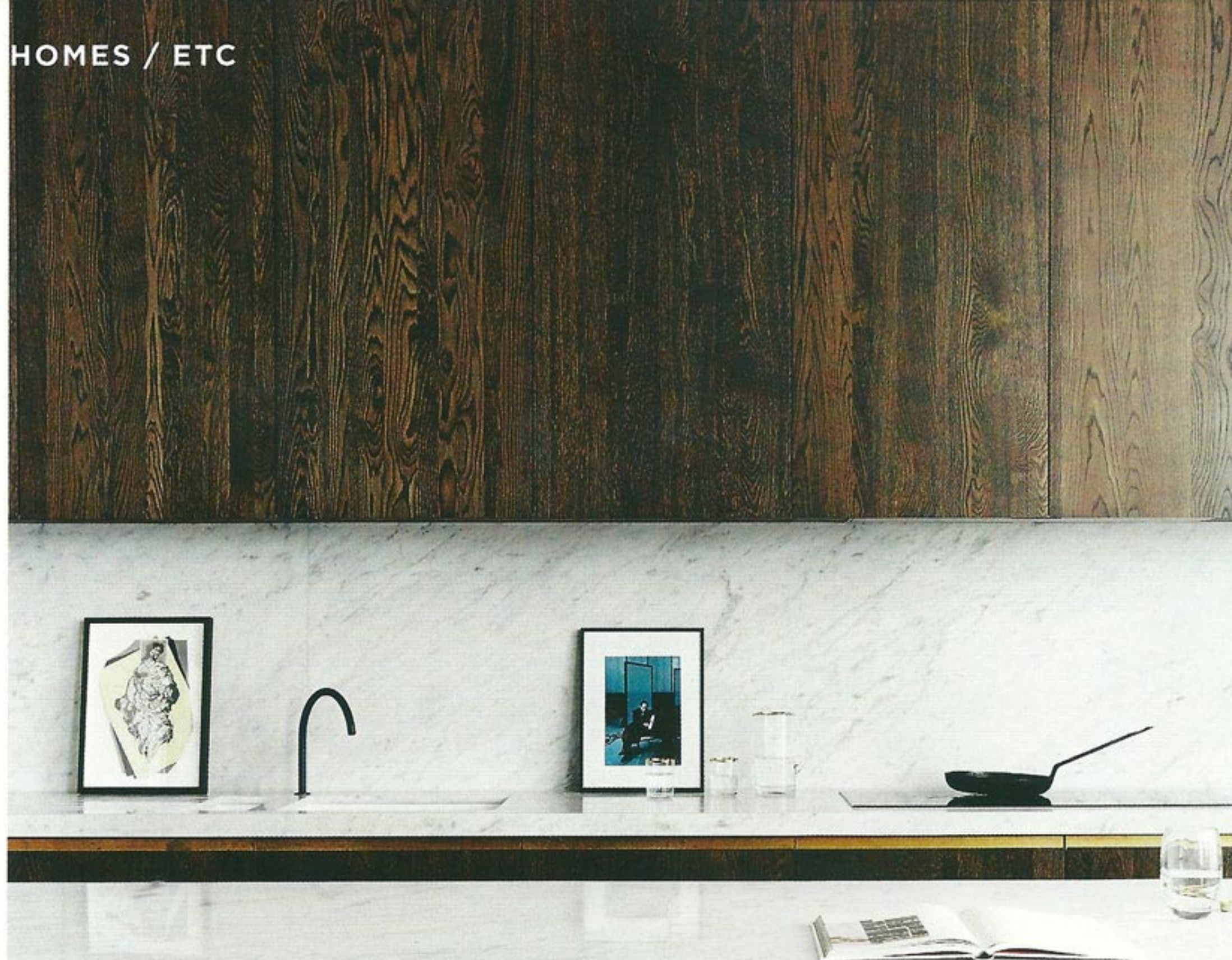
HOME PROFILE

THE OWNERS Rebecca Wakefield, creative director of Banda, a boutique property search and development company, her partner Josh Fortnum, a quantity surveyor, and Mavis the rescue dog.
THE PROPERTY A ground-floor apartment in a renovated Victorian bakery factory in southwest London. There is a large open-plan kitchen/dining space, living area, two en-suite bedrooms and a WC.

KITCHEN-DINER

Entertaining is a priority for Rebecca. 'It's rare to have such a big dining area in most London apartments, so being able to create this room was the deal breaker for me,' she says.

Get the look The bespoke dining table was constructed by a local joiner and welder. These are Normann Copenhagen's Knot chairs. The lighting is by Lindsey Adelman. The chevron flooring is from Solid Floor.



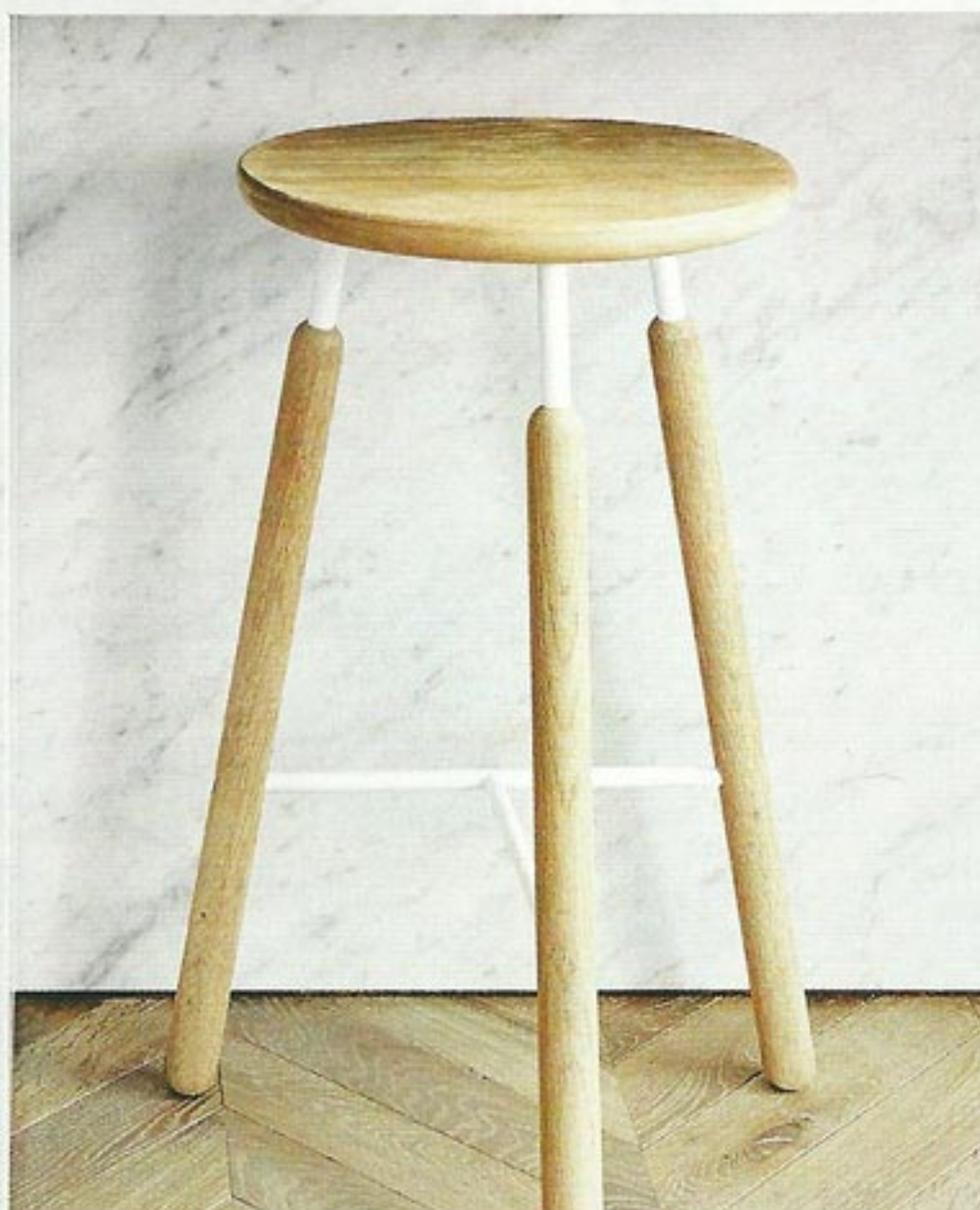
‘It’s all about the light,’ insists Rebecca Wakefield. ‘I need it! Don’t we all? A simple thing, but it makes me happy.’ This explains why, as the owner of this sun-saturated ground-floor apartment in southwest London, Rebecca’s smile is rather bright and shiny too.

As flats go, this one is huge. A converted space in a Victorian bakery factory, which after spells as a children’s nursery and an architect’s studio was discovered ‘unloved, but full of so much potential’. With her background as an architect, Rebecca knew from the off what she wanted to do. ‘It has these amazing big arched windows and high ceilings, but it was configured into poky sections,’ she recalls. ‘I wanted to strip it all out, back to the shell and keep it open plan. It’s vast and normally, you’d fit in a lot more than two bedrooms into such an expansive floor space, but I wanted a gigantic living area instead.’

And, yes, there is enough room to swing a hundred cats and almost enough UV to warrant sunglasses, but there’s also a serene quality to this home that hasn’t happened by accident. ‘I have a high-octane job and personality,’ admits Rebecca, ‘so I wanted somewhere to balance that out. I’m on building sites most days, running around like crazy, so I’ve chosen white as my base colour mixed with natural materials to give an overall calming effect. Keeping a neutral feel is therapeutic.’

It certainly is a haven. Rebecca doesn’t even own a television. ‘I don’t watch TV. I just read anything and everything,’ she says. Her other passion is cooking, which explains why she insisted on this significant kitchen/dining area, with its dramatic bespoke dark oak units, a central island that’s nearly four metres long and an expansive table that can seat up to 14 guests. ‘It’s my favourite room,’ she says. ‘Josh [Fortnum, her partner] and I love having friends over. I hate to be shut away while I’m cooking and here, there’s tons of space for prep, but my friends can sit watching me and chat while I’m putting things together. The kitchen is the hub of any home and I wanted mine to be practical, but also to look amazing.’

There are dynamic touches everywhere in this apartment, though. Daring shadowy wood panelling in the hall counteracts the brilliance of the main rooms, statement steel-framed glazed doors accentuate the drama and a beautiful chevron floor spreads underfoot. ‘I sourced local people for a number of my materials



KITCHEN-DINER

‘I love all the natural materials used here and everything has been so beautifully handcrafted,’ says Rebecca. ‘It took me weeks to decide on the stain colour for the oak units, but I’m so happy with it – worth the deliberation!’ **Get the look** This is bespoke solid-oak joinery from Aldworth James & Bond. The worktops, splashback and island are all Carrara marble. The tap is from Dornbracht. The stool is from &tradition.

'I couldn't resist choosing natural materials. They create the perfect combo – warmth and drama'



and bespoke designs,' says Rebecca. 'Because I deal with suppliers day to day at work, I have built up a great relationship with them.'

Her statement artwork is also a particular passion. 'As the interior is so muted, it works really well with bold photography,' she explains. She's opted for fashion industry heavyweights: David Sims' 'Horse and the Walking Lady' in the dining room and Nick Knight's innovative photographs in the living room. 'Their work adds a touch of femininity,' she says, smiling. Rebecca's also keen on feature lights. 'Look at this Lindsey Adelman one above the dining table. She makes these amazing sculptural designs – you just can't help staring at them.'

As if on cue, Mavis, a rescue dog from Dogs Trust, trots into the living room and sits looking at Rebecca with *It's-walk-time* eyes. 'There's a huge park just 30 seconds away, so this is an ideal location for Mavis,' Rebecca says with a laugh. 'She's such a placid dog, but loads of my friends can't believe I've got a dog and white upholstery. The other day, I realised she's got similar colouring to the tones I've chosen in the flat. I suppose that makes her part of the furniture.' Lucky Mavis.

See more of Rebecca's work at bandaproperty.co.uk

For more info about adopting a rescue dog, visit dogstrust.org.uk



LIVING ROOM

'This room is so relaxing and calm, but when it has to step up to the mark, it does a good job! At a push, we can get ten on the sofa and at our biggest party, we had 50 in here for drinks,' says Rebecca.

Get the look The bespoke sofa was designed by Rebecca, upholstered in Clarke & Clarke fabric and made by Alter London. The leather Falcon chair by Sigurd Ressel is an eBay find. The overhead light is Lindsey Adelman.

HOME TRUTHS

What's your favourite breakfast? Eating it at night-time. There's something so satisfyingly wrong about cereal for supper.

And favourite body part? Hands. As a designer, they come in quite handy. Ha!

Who would you most like to be reincarnated as? Mies van der Rohe – a true visionary and pioneer; his designs will be eternally appreciated. I'd love to have his brain.

Top weekend activity? Walking to New Covent Garden flower market on a Saturday morning through Battersea Park, followed by a peaceful, tasty brunch in my kitchen, followed by hosting a dinner party for friends, lasting into the early hours.

What would be your alternative career? I love my job, but I'd be a florist. I adore flowers and I'd love to see all the private messages on deliveries!

Five dinner party guests dead or alive... Dolly Parton, Bradley Cooper, Marie Antoinette, Sir Alan Sugar and Kevin McCloud. What an epic party that would be, with a great mixture of music, history, design, business and glamour.



DINING ROOM

Rebecca believes it's important to make a statement with either lighting or art. Here, she's used both, but unites the two by maintaining her monochrome colour theme.

Get the look The black and white photograph, *Iselin*, is by David Sims. The lights are by Lindsey Adelman.



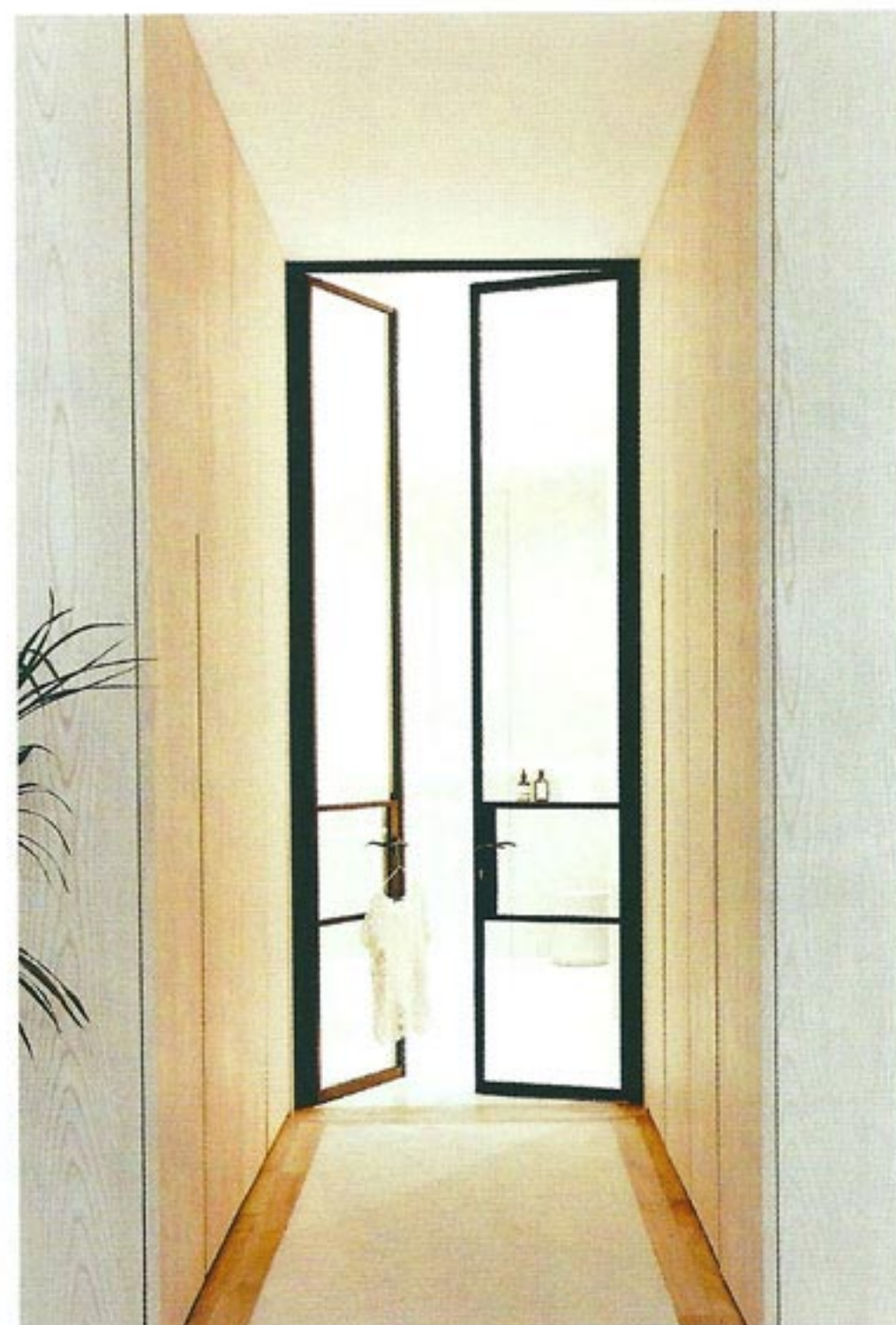
LOBBY

The moment visitors walk through the front door, they're wowed by the décor that greets them. This distinctive lobby makes the most of the high ceilings, impressive dark wood walls and herringbone flooring. **Get the look** The mirror is a custom-made design. This is the Originals love seat in Black by Ercol.

VIEW TO MASTER EN SUITE



The master bedroom flows seamlessly through the dressing room to reach these glass and steel industrial doors into the en suite. **Get the look** The whitewashed oak wall panelling was made bespoke by Aldworth James & Bond. NordicAluTimber made the double doors.



LIVING ETC LOVES

The expanse of open space for single-level living, which is practical and totally dramatic.

Layers of natural wood, in every shade from moody to golden, seen in the herringbone floor, bespoke cabinets and statement furniture.

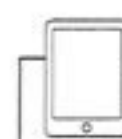
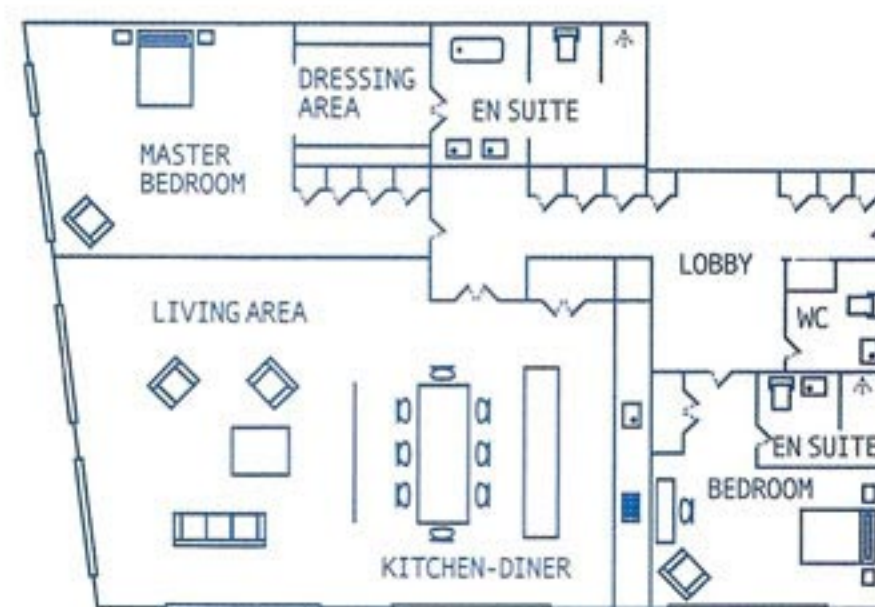
The monochrome palette, which gives an elegant and modern quality to the environment.

Lighting as a show stopper. Classic designs with added edge.

The specially created wraparound headboard on the bed that provides privacy and unique elegance.

Industrial steel-framed doors, which put a contemporary twist on a traditional feature.

THE BLUEPRINT



See more great houses at housetohome.co.uk/house-tours



MASTER BEDROOM

'This is somewhere I really only spend time getting ready and sleeping,' says Rebecca. 'So I love the fact you walk through the dressing area to the en suite and that there's so much cupboard space.'

Get the look The bespoke wraparound headboard in Romo's Launay linen in Silver Birch is by Alter London. The IC pendant is by Michael Anastassiades for Flos at LivingetcEdit.com.

MASTER EN SUITE ↗

Carrara marble teamed with black brassware adds drama to the classic design.

Get the look The matt black brassware is from Dornbracht. The steel-framed doors are from NordicAluTimber.

While most of Rebecca's home works a classic Scandi vibe, these steel-framed glass doors shake things up, giving a modern, industrial feel. The combination of glass and steel and the generous high ceilings allow the bright bathroom to illuminate the hallway – a light at the end of the tunnel, if you will. The darkness of the frames is even more arresting when paired with pale wood panelling and offers a striking shift into the marble-dominated bathing zone. NordicAluTimber (nordicaultimber.co.uk) supplied these bold beauties and can install something similar from £6,120.

FROM LEFT Lyndhurst Chevrons oak flooring, from £139.85 per sq m, Ecora; Great White estate emulsion, £39.50 for 2.5l, Farrow & Ball; and Calacatta Oro marble tiles, from £119.47 per sq m, Mandarin Stone

Franklin chandelier, £459,
Menu and Søren Rose Studio
at Nest.co.uk

Oscar de la Renta **drawing**,
£1,250, Barbara Hulanicki
at Fashion Illustration Gallery

Circle **cushion**, £49,
Roar + Rabbit at West Elm

Cervilla mirror, £550,
Eichholtz at Houseology

Clerkenwell sideboard, £650, Habitat

Betty vase, £36, Brissi

Faux bay tree,
£350, Cox & Cox